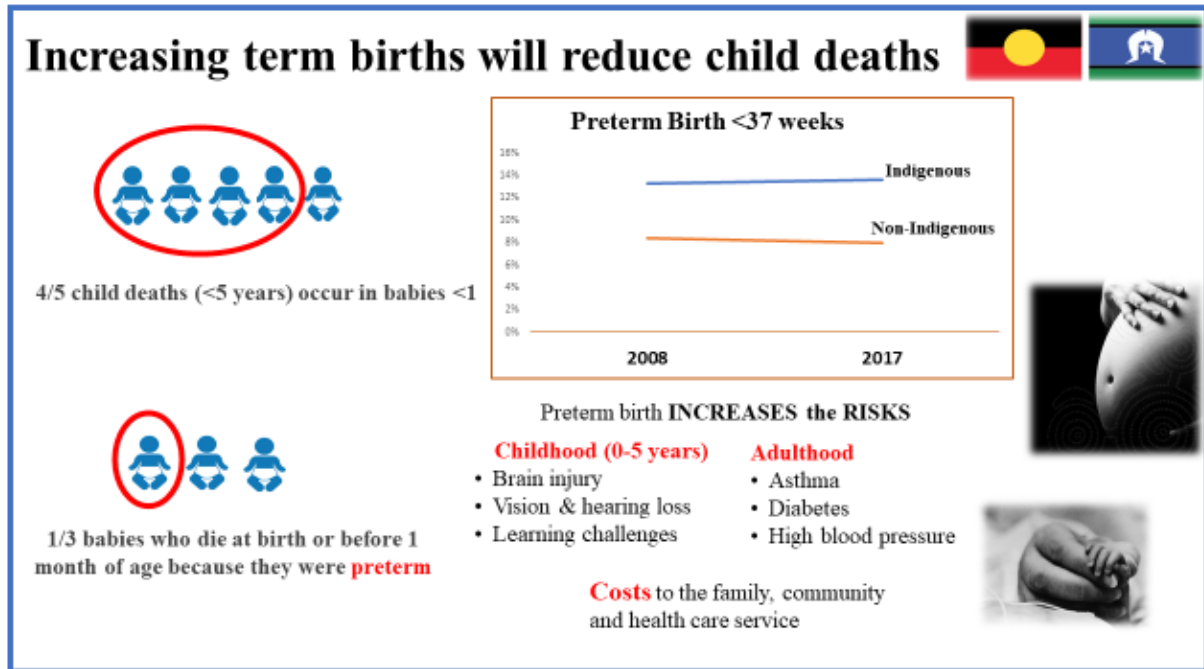
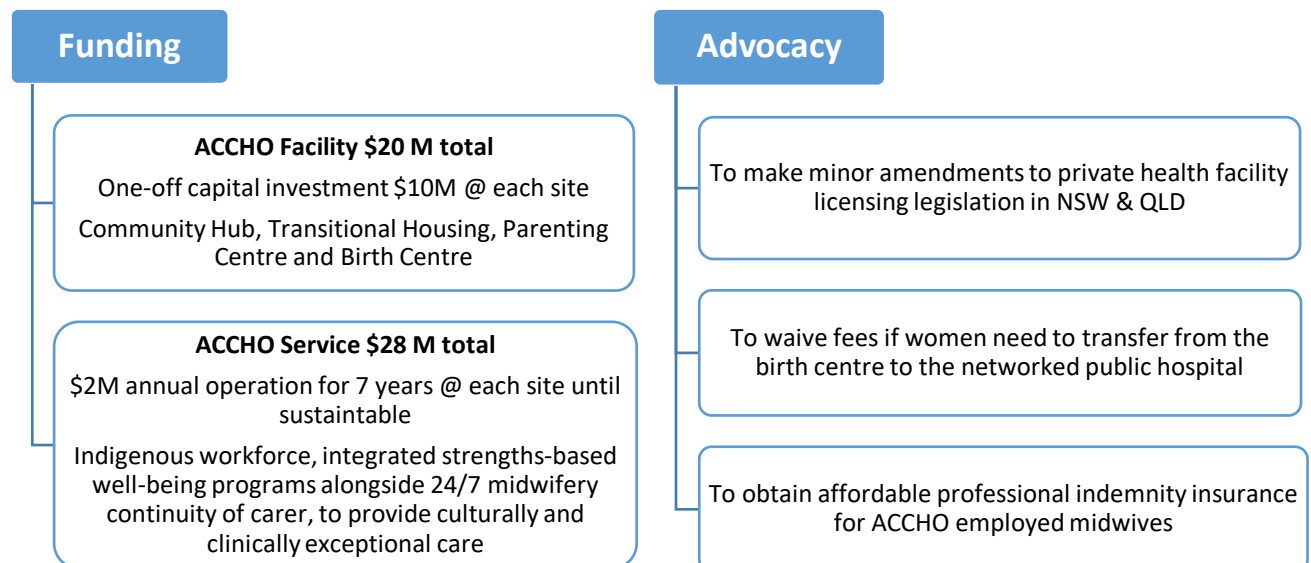


Birthing on Country services and facilities in Brisbane & Nowra: impact for Aboriginal and Torres Strait Islander families



Birthing on Country is community-driven innovative national solution to Closing the Gap.

It will increase life expectancy and quality of life through a reduction in preterm birth, low birth weight, child and maternal morbidity and mortality. Cost saving will result from improved health outcomes e.g. a single episode of neonatal nursery care for a preterm baby costs \$52,984 (range \$3,591 - \$297,567). Aboriginal Community Controlled Health Organisations (ACCHOs) will work in partnership with mainstream services to progress Birthing on Country. Gold-standard midwifery continuity of care will be **provided to all women** using the National Guidelines for Consultation and Referral with medical practitioners. Those with *normal risk pregnancies* birth in the standalone Birth Centre that is networked into the closest maternity hospital, where women with *complex care needs* will birth with their known midwife providing their clinical care. We need Government investment.



Birthing on Country Logic Model					
Inputs	Operational funding at each site		Capital works funding at each site		NHMRC research grant
Activities	Establish partnerships ACCHOs collaborate with key stakeholders	Develop services ACCHO employed and insured midwives provide continuity of carer with family well being workers	Develop facilities ACCHO owned, maternity hub + licensed Level 2 birth centres	Develop programs strengths-based social and emotional well-being programs	Develop career pathways Monitor cultural safety
Outputs	Indigenous-governed maternity service and facility Culturally and clinically safe, accessible and cost-effective		Strengths-based, holistic programs integrated into maternal infant health service		Pathways for midwifery and nursing higher education for Aboriginal students Cultural safety package for non-Indigenous staff Tools to measure cultural safety
Outcomes	<ul style="list-style-type: none"> ▲ Healthy mothers and babies ▲ Health engagement (early and sufficient maternity care) ▼ Risks (e.g. smoking, infections) ▼ Babies born too soon (preterm) ▼ Babies born too small (low birth weight) <ul style="list-style-type: none"> ▲ Normal births ▼ Cost to families and government 		<ul style="list-style-type: none"> ▲ Optimal nutrition mums and bubs (e.g. breastfeeding) ▲ Emotional resilience ▲ Family preservation and restoration ▲ Parental effectiveness ▼ Stress in pregnancy and homelessness ▼ Infant hospitalisations ▼ Child removals 		<ul style="list-style-type: none"> ▲ Indigenous health workforce ▲ Indigenous students ▲ Indigenous degree graduates ▲ Indigenous research workforce ▲ Cultural Safety ▼ Racism and discrimination
Impact	Birthing on Country sites which demonstrate how to Close the Gap for Aboriginal and Torres Strait Islander mothers and babies				

ACCHO = Aboriginal Community Controlled Health Organisation

For further information please contact:

Ms Faye Worner
 CEO Waminda South Coast
 Women's Health and Welfare
 Aboriginal Corporation
 P: 0409787763
faye@waminda.org.au

Mr Adrian Carson
 CEO Institute of Urban
 Indigenous Health
 Brisbane
 P: 07 3648 9500
adrian.carson@iuih.org.au

Ms Jody Currie
 CEO Aboriginal & Torres Strait
 Islander Community Health
 Service Brisbane
 P: 07 3240 8900
jody.currie@atsichsbrisbane.org.au

Ms Cherisse Buzzacott
 Birthing on Country Project Officer
 Australian College of Midwives
 M: 0488 228 667
cherisse.buzzacott@midwives.org.au

Ms Melanie Robinson
 CEO Congress of Aboriginal
 and Torres Strait Islander
 Nurses and Midwives
 P: 02 6262 5761
ceo@catsinam.org.au

Professor Sue Kildea
 Director Midwifery Research Unit
 Mater Research Institute
 University of Queensland
 M: 0418289199
s.kildea@uq.edu.au